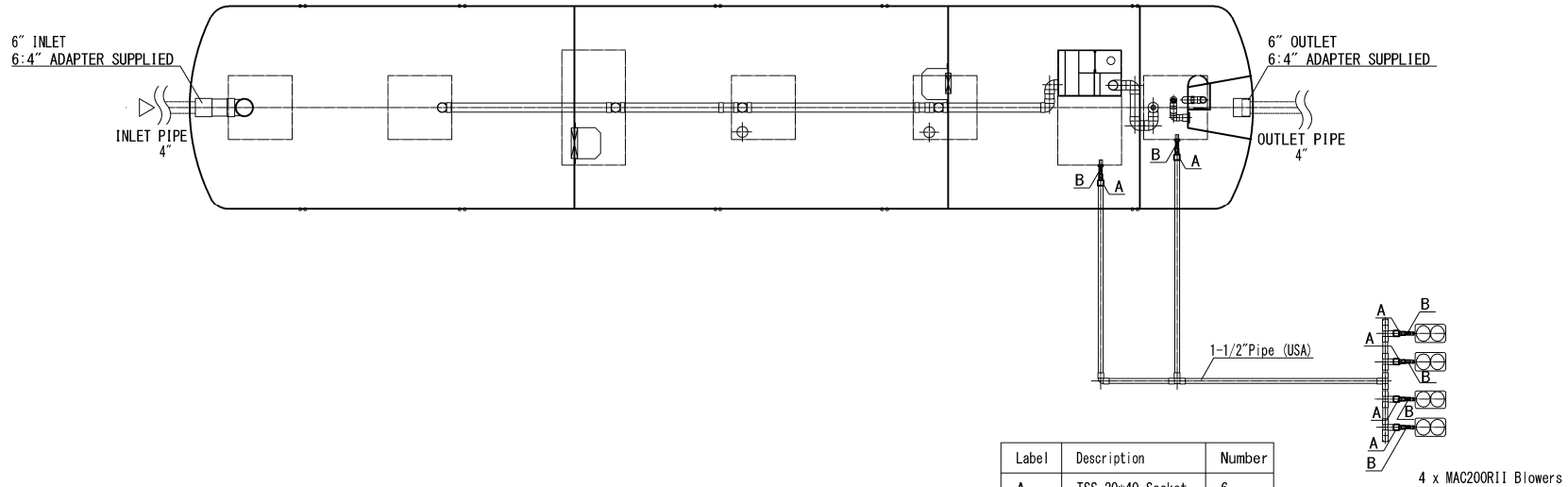


# PIPING DIAGRAM



Label	Description	Number
A	TSS 20*40 Socket	6
B	VP20 Pipe	-

FUJI CLEAN USA, LLC  
 41 GREENWOOD ROAD  
 BRUNSWICK, ME 04011  
 (207) 406-2927  
 WWW.FUJICLEANUSA.COM

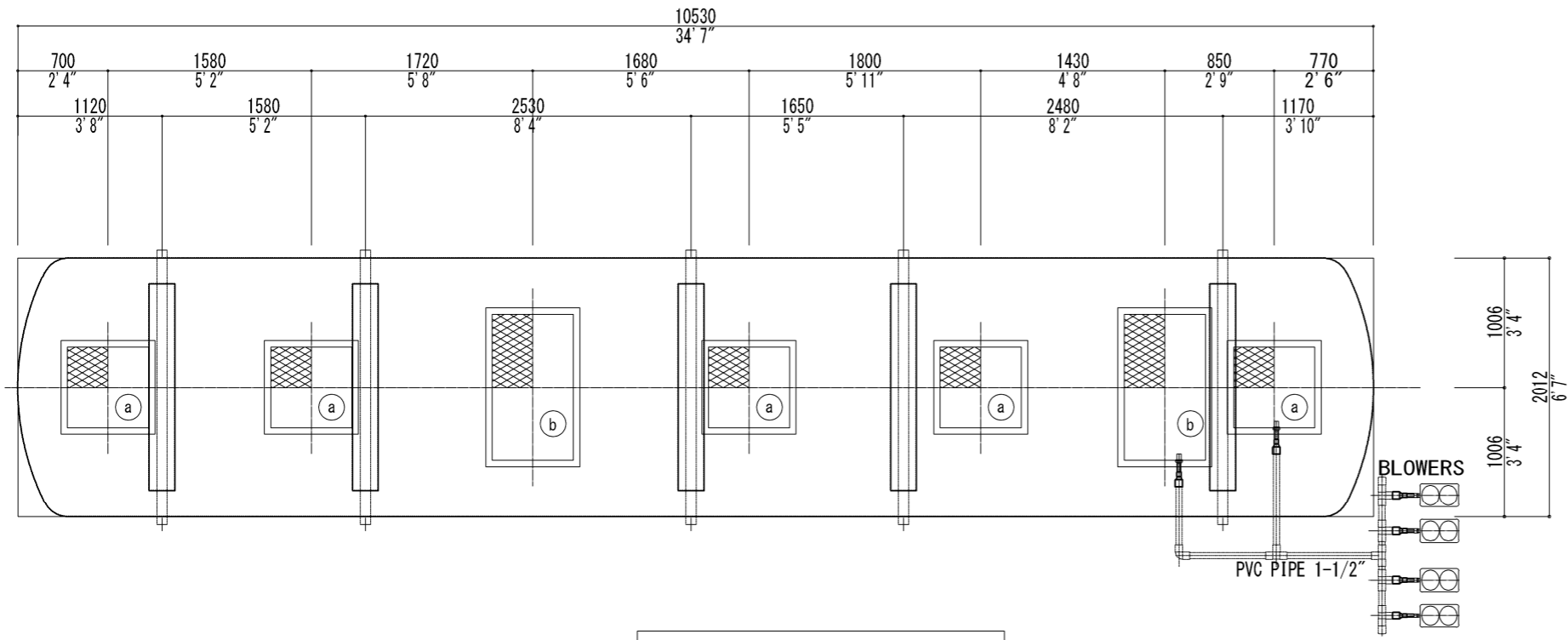
DATE: 08-11-2020

DRAWN BY: MIYA

REVISIONS:

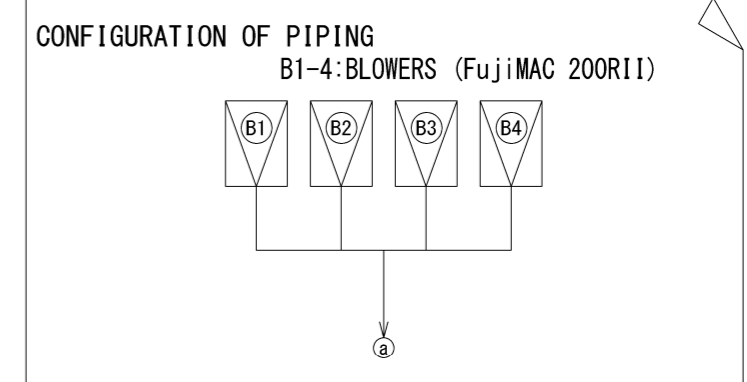


FUJI CLEAN CE6KG

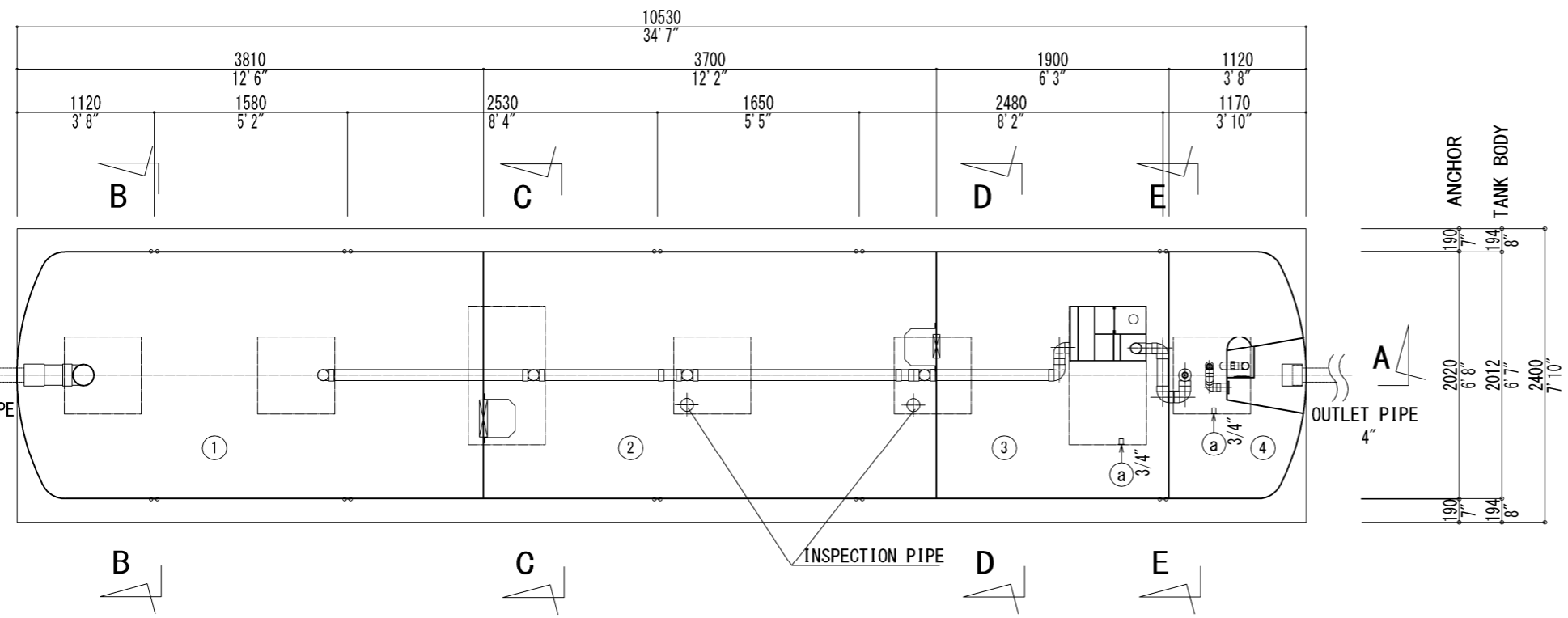


TOP VIEW

SCHEDULE 40 DIAMETER	
COMMON NAME	OUTSIDE DIAMETER
3/4"	1.05 INCHES
1-1/2"	1.9 INCHES
4"	4.5 INCHES



SPECIFICATIONS			
MODEL NAME	FujiClean PLANT MODEL CE6KG		
DESIGN HYDRAULIC LOADING	6000 GAL /DAY		
SPECIFICATIONS OF BLOWERS			
BLOWER	MAC200RII (3/4" x 155W x 7.1CFM) x 4UNITS		
TREATMENT COMPOSITION			
NAME OF CHAMBER	CAPACITY		
① SEDIMENTATION CHAMBER	2639 GAL x 1 UNIT		
② ANAEROBIC FILTRATION CHAMBER	2647 GAL x 1 UNIT		
③ CONTACT FILTRATION CHAMBER	1358 GAL x 1 UNIT		
④ CLARIFICATION CHAMBER	594 GAL x 1 UNIT		
TOTAL CAPACITY	7239 GAL x 1 UNIT		
MANHOLE DIMENSIONS			
SIZE	QTY	LOAD	MATERIAL (COLOR OF MANHOLE & RINGS ARE GRAY.)
a 2' 4" x 2' 4"	5	500K	LIDS:FRP, RINGS:STEEL (GALVANIZED)
b 2' 4" x 3' 11"	2	500K	LIDS:FRP, RINGS:STEEL (GALVANIZED)



PIPES BETWEEN TANK AND BLOWERS ARE SUPPLIED BY INSTALLER.

INTERNAL PLAN VIEW

- \*1 TOP LOAD IS DESIGNED AS WALKABLE.
- \*2 ELECTRIC VOLTAGE IS 120V/60Hz.
- \*3 GL IN THE DRAWINGS INDICATES TOP (MANHOLE LID) LEVEL.
- \*4 THE AIR LINE DISTANCE BETWEEN UNIT AND BLOWER SHOULD BE WITHIN 65 FEET AND FEWER THAN 5 "ELBOWS".
- \*5 INFLOW AND EFFLUENT PIPE AND CONNECTION WORK ARE EXCLUDED FROM THE UNIT.
- \*6 AIR VENT AND CONNECTION WORK ARE SUPPLIED BY CONTRACTOR.
- \*7 ALARM WIRING BEYOND UNIT IS SUPPLIED BY CONTRACTOR.
- \*8 SOIL BEARING POWER SHOULD BE EQUAL OR MORE THAN 1254 LBF/FT. 2.
- \*9 EXCAVATION AND RELATED WORK ARE EXCLUDED FROM THE UNIT.
- \*10 WATER AND TEMPORARY POWER LINE ARE EXCLUDED FROM THE UNIT.
- \*11 BACKFILL MATERIAL MUST MEET STANDARDS SPECIFIED IN INSTALLATION MANUAL.
- \*12 THIS DRAWING IS FOR 0 INCH RISER. 12" OPTIONAL RISERS ARE AVAILABLE.
- \*13 INSTALLATION SITES IN CLOSE PROXIMITY TO A BUILDING STRUCTURE REQUIRE ENGINEER REVIEW.
- \*14 EFFLUENT QUALITY DEPENDS ON INFLUENT STRENGTH AND HYDRAULIC FLOW.
- \*15 INLET AND OUTLET PIPE (6 INCHES) ARE BOTH PREFITTED EX FACTORY IN JAPAN.

FUJI CLEAN USA, LLC  
41 GREENWOOD ROAD  
BRUNSWICK, ME 04011  
(207) 406-2927  
WWW.FUJICLEANUSA.COM

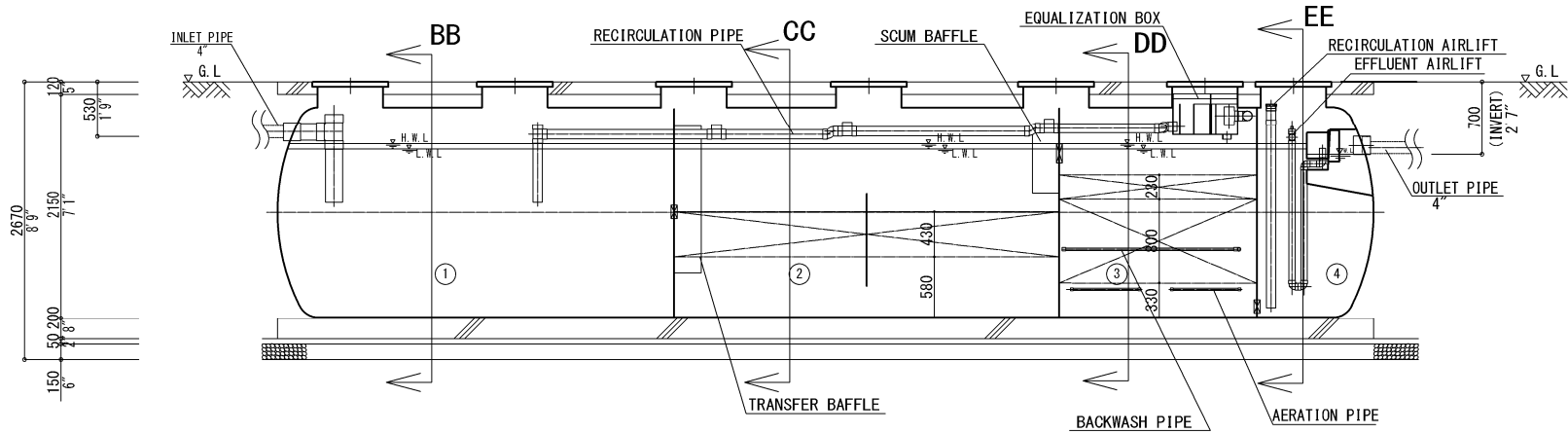
DATE: 08-11-2020

DRAWN BY: MIYA

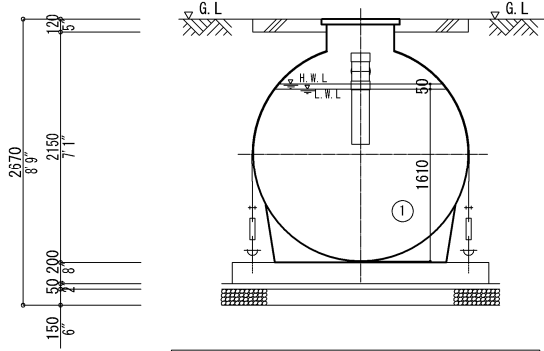
REVISIONS:



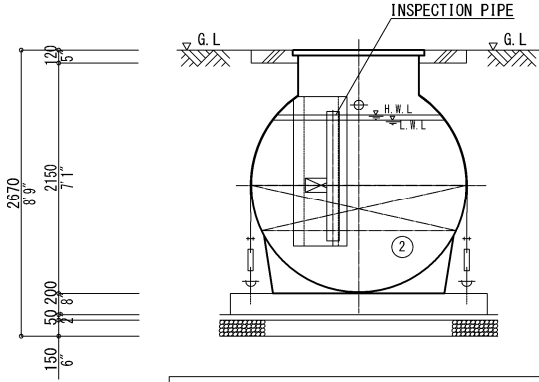
FUJI CLEAN CE6KG



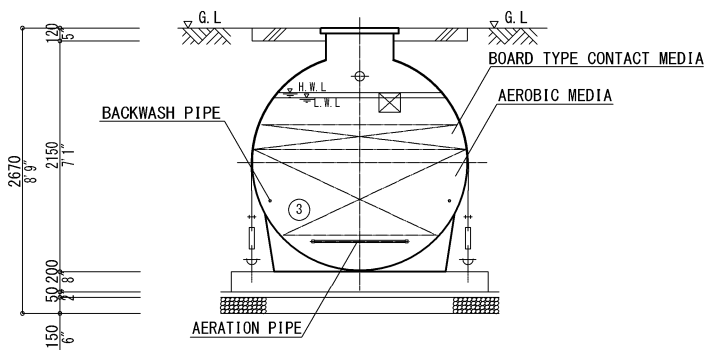
**A-A SECTION**



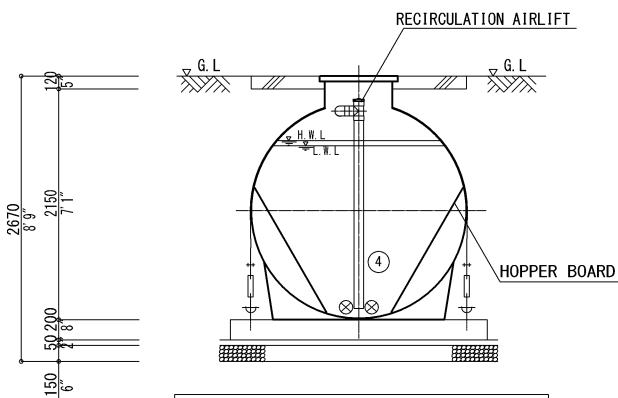
**B-B CROSS-SECTION**



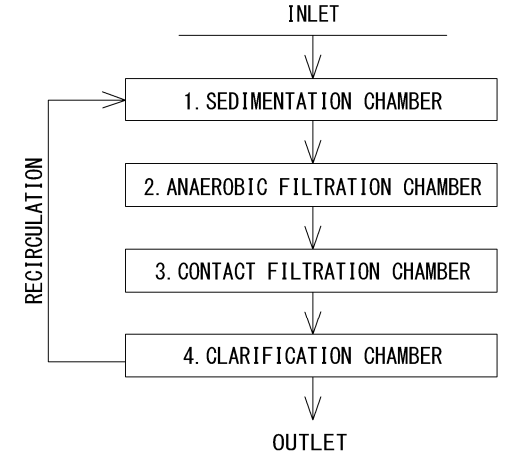
**C-C CROSS-SECTION**



**D-D CROSS-SECTION**



**E-E CROSS-SECTION**

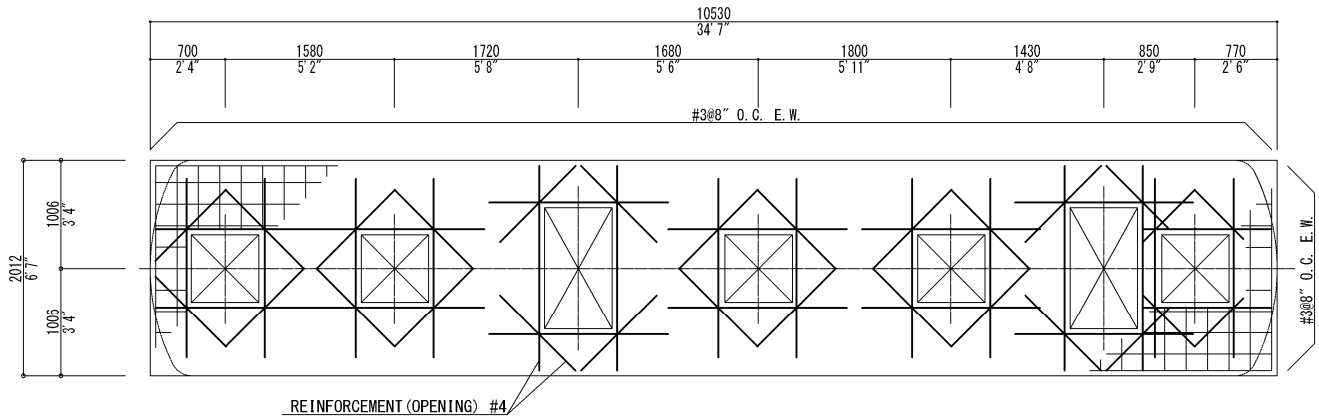


FUJI CLEAN USA, LLC  
 41 GREENWOOD ROAD  
 BRUNSWICK, ME 04011  
 (207) 406-2927  
 WWW.FUJICLEANUSA.COM

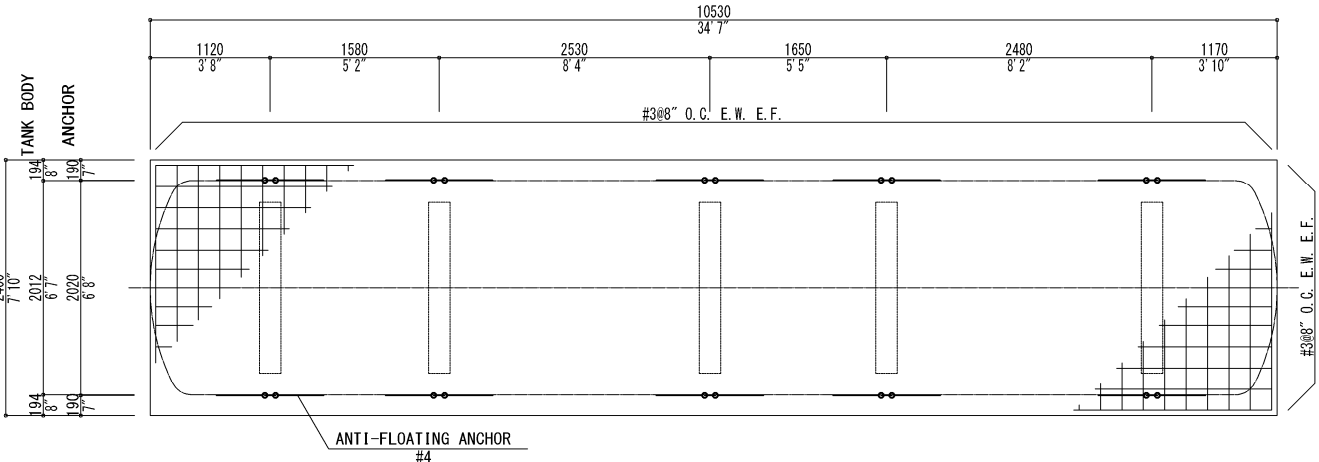
DATE: 08-11-2020  
 DRAWN BY: MIYA  
 REVISIONS:



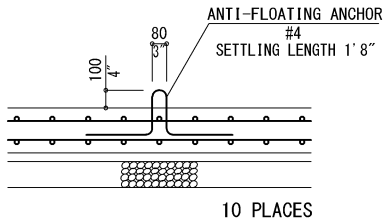
**FUJI CLEAN CE6KG**



REINFORCEMENT (TOP SLAB)



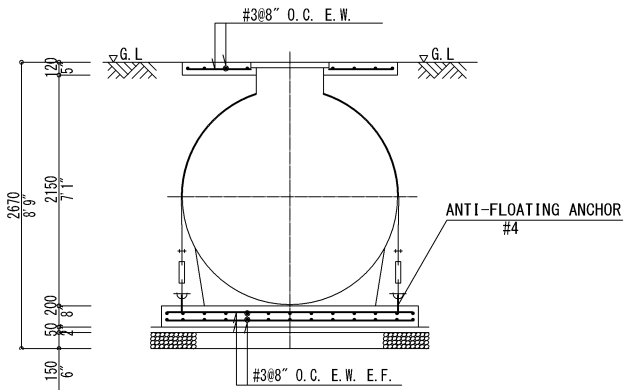
REINFORCEMENT (BASE SLAB)



ANTI-FLOATING ANCHOR DETAIL (ENLARGED)

**SPECIFICATION**  
 CONCRETE STRENGTH: F'c= 3100PSI, MIN.  
 STEEL WIRE: GRADE 60.  
 CONCRETE COVER: 2-1/2", MIN.  
 ANCHORAGE LENGTH: 40d, MIN.  
 FOUNDATION: 6", MIN. #57 STONE.

GL IN THE DRAWING INDICATES TOP (MANHOLE LID) LEVEL.



CROSS SECTIONAL REINFORCEMENT PROFILE

FUJI CLEAN USA, LLC  
 41 GREENWOOD ROAD  
 BRUNSWICK, ME 04011  
 (207) 406-2927  
 WWW.FUJICLEANUSA.COM

DATE: 08-11-2020

DRAWN BY: MIYA

REVISIONS:



FUJI CLEAN CE6KG